



RON COOPER  
Two R's Embracing  
2011  
Photopolymer And Full Bleed Roll  
22 x 30"



RON COOPER  
Te Los Curas de Todo  
Photopolymer Print With Hand Coloring In Text  
Mounted On Foam Core On Corrugated Tin  
20.5 x 14.75" Image | 29 x 24" Corrugated Tin



RON COOPER  
Untitled  
2011  
Silkscreen On Oval Canvas  
14 x 11"



GUY DILL

Panel Print #2

2008

Blind Emboss

15 x 15" Image | 22 x 31" Hahnemuhle Warm White



GUY DILL

Panel Print #5

2008

Blind Emboss

15 x 15" Image | 22 x 31" Hahnemuhle Warm White



GUY DILL

Panel Print #6

2008

Blind Emboss

15 x 15" Image | 22 x 31" Hahnemuhle Warm White



GUY DILL

Panel Print #7

2008

Blind Emboss

15 x 15" Image | 22 x 31" Hahnemuhle Warm White



GUY DILL

Panel Print #8

2008

Blind Emboss

15 x 15" Image | 22 x 31" Hahnemuhle Warm White



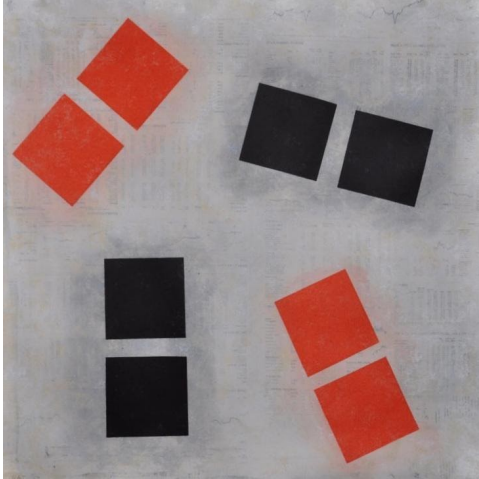
GUY DILL

Panel Print Triptych

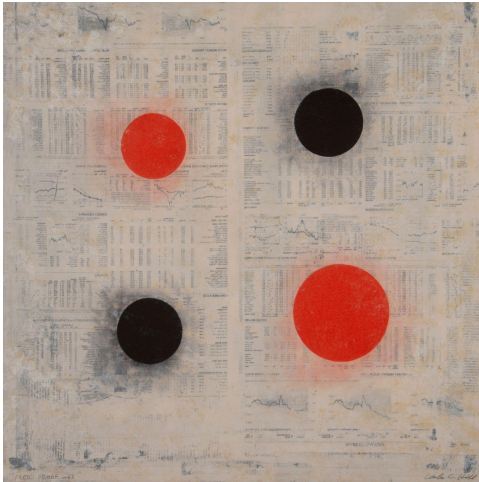
2008

Blind Emboss

19.5 x 6" Image | 22 x 31" Hahnemuhle Warm White



CHARLES CHRISTOPHER HILL



CHARLES CHRISTOPHER HILL  
Four Circles  
2017  
Photopolymer Etching In Five Colors  
22 x 22"



CHARLES CHRISTOPHER HILL  
Bars  
2014  
Collograph  
22 x 15" Paper | 6 x 6" Image





CHARLES CHRISTOPHER HILL  
Taos  
Aquatint With Roll



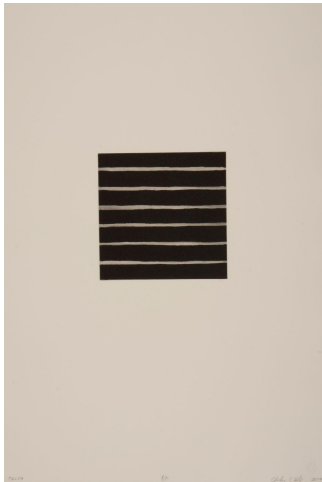
CHARLES CHRISTOPHER HILL  
Ortiz  
Aquatint



CHARLES CHRISTOPHER HILL  
Llanno  
Aquatint



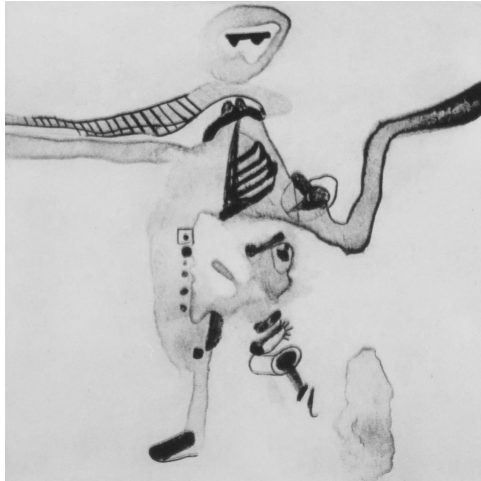
CHARLES CHRISTOPHER HILL  
Ranchitos  
Aquatint



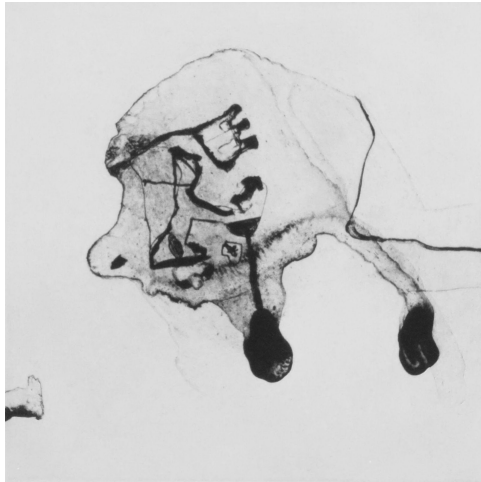
CHARLES CHRISTOPHER HILL  
Talpa  
Aquatint



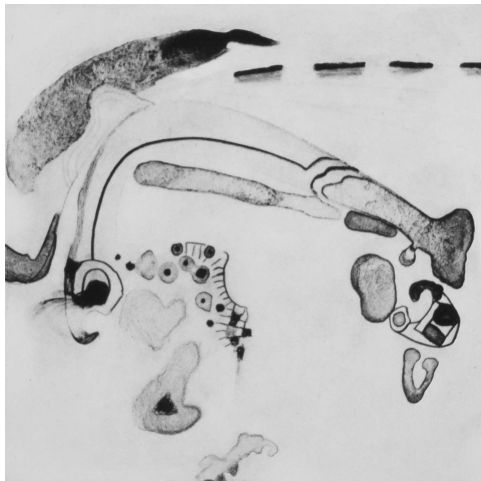
ELLIOT NORQUIST  
Untitled  
Viscosity Collagraph  
8 x 8"



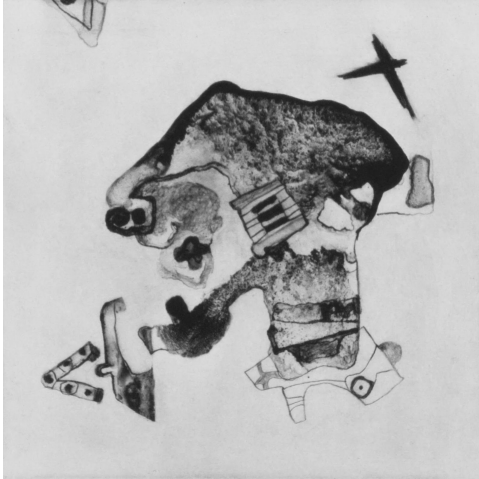
MARCIA OLIVER  
Six / Six: One  
Ground Glass Drawing Printed From Solarplate  
7 x 7" Image | 15 x 15" White BFK



MARCIA OLIVER  
Six / Six: Two  
Ground Glass Drawing Printed From Solarplate  
7 x 7" Image | 15 x 15" White BFK



MARCIA OLIVER  
Six / Six: Three  
Ground Glass Drawing Printed From Solarplate  
7 x 7" Image | 15 x 15" White BFK

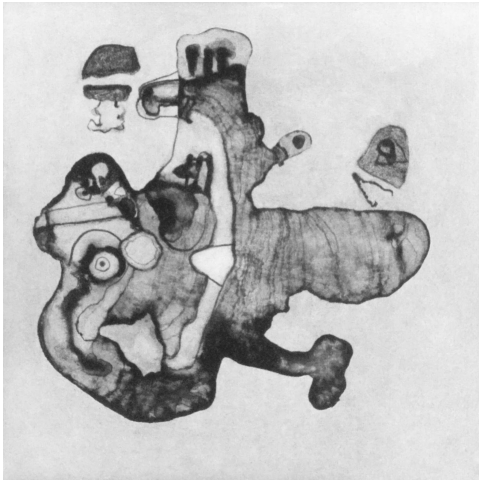


MARCIA OLIVER

Six / Six: Four

Ground Glass Drawing Printed From Solarplate

7 x 7" Image | 15 x 15" White BFK



MARCIA OLIVER

Six / Six: Five

Ground Glass Drawing Printed From Solarplate

7 x 7" Image | 15 x 15" White BFK



MARCIA OLIVER

Six / Six: Six

Ground Glass Drawing Printed From Solarplate

7 x 7" Image | 15 x 15" White BFK

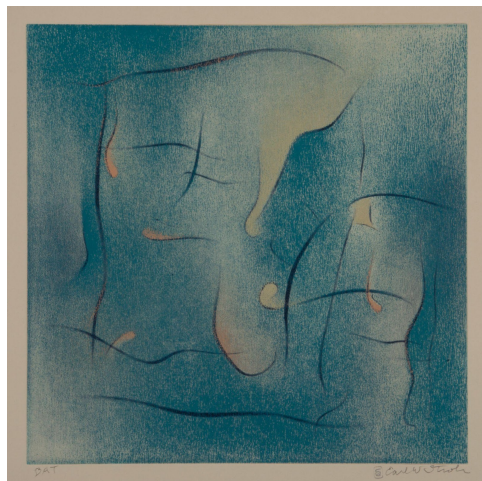




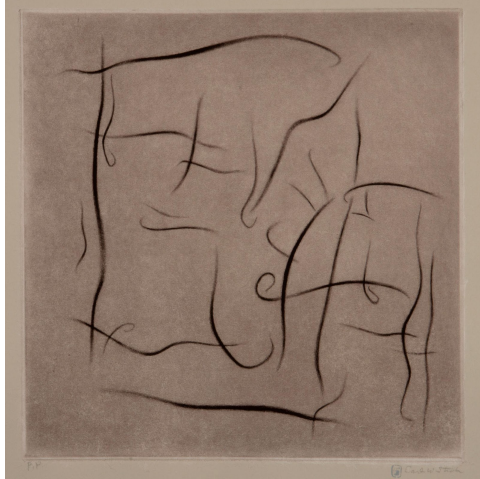
KENNY PRICE  
Unintended Sighting  
2003  
Photopolymer Etching  
From Hand Drawings On Duralar  
13.75 x 9.75"



EARL STROH  
Hardwood Portfolio Print  
2002  
15 x 22" BFK Grey



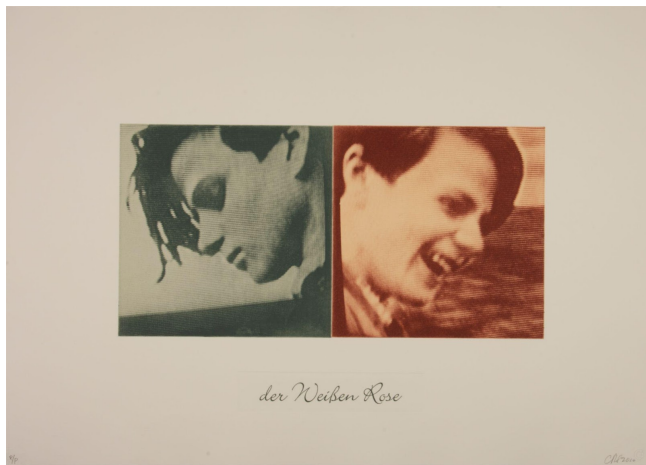
EARL STROH  
Allegro  
2003  
Intaglio Solarplate From Grained Glass Drawing  
With Chine Colle' Backdrop Of Kozo Paper  
12 x 12" Image | 24 x 24" BFK Tan



EARL STROH  
Allegro Ma Non Troppo  
2004  
Four Color Etching  
From Hand Drawings On Grained Glass  
11.75 x 11.75" Image | 24 x 24" BFK Grey



CHARLIE STRONG  
White Rose Suite | Sophie With Roses 4 Up  
2010  
Photopolymer Etching  
22 x 31" Hahnemuhle | Image 19.75 x 19.5" + Text



CHARLIE STRONG  
White Rose Suite | Sophie Double Profile  
2010  
Photopolymer Etching  
22 x 31" Hahnemuhle | Image 10 x 20" + Text



CHARLIE STRONG

Vera

2010

Photopolymer Etching

22 x 31" Hahnamuhle | Image 10 x 20"



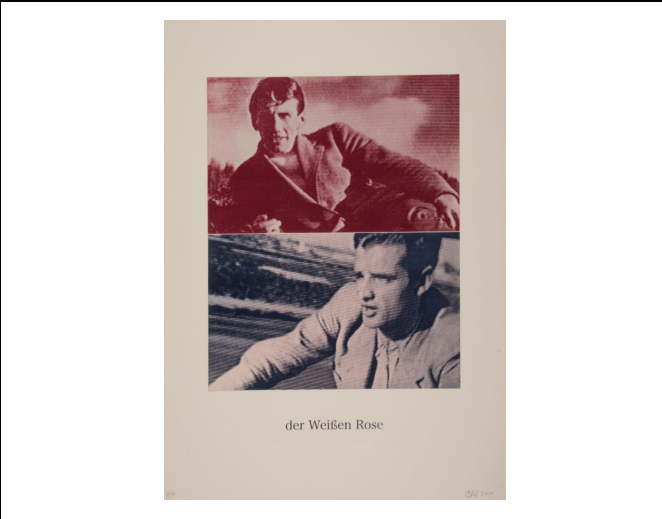
CHARLIE STRONG

White Rose Suite | 4092

2010

Photopolymer Etching

22 x 30" Hahnamuhle | Image 10 x 20" + Text



CHARLIE STRONG

White Rose Suite

2010

Photopolymer Etching

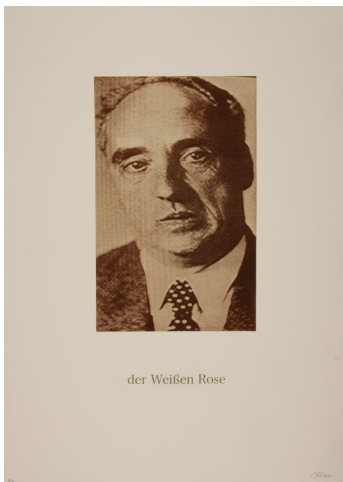
22 x 31" Hahnamuhle | Image 19.75 x 15.75"



CHARLIE STRONG  
White Rose Suite | Guillotine  
2010  
Photopolymer Etching  
22 x 31" Hahnamuhle | Image 20 x 10"

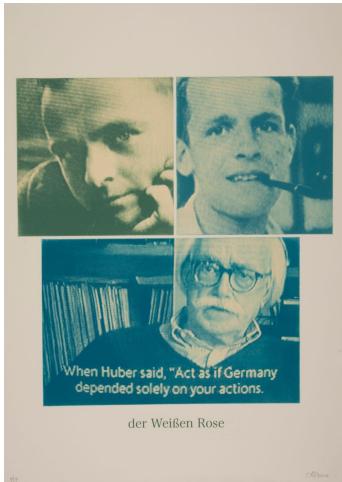


CHARLIE STRONG  
White Rose Suite | Sophies Grave  
2010  
Photopolymer Etching  
22 x 31" Hahnamuhle | Image 10 x 20" + Text

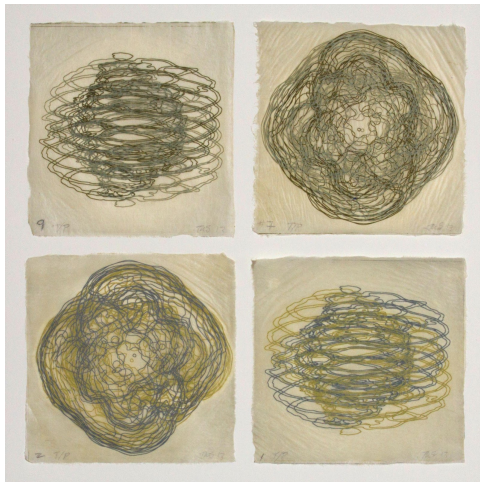


CHARLIE STRONG  
White Rose Suite | The Professor  
2010  
Photopolymer Etching  
22 x 31" Hahnamuhle | Image 16 x 10.25" + Text

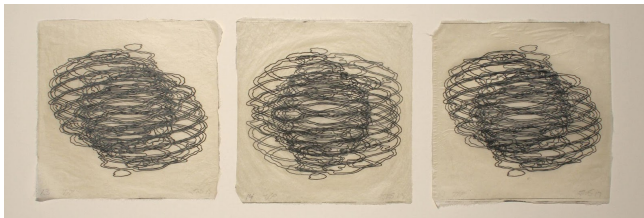




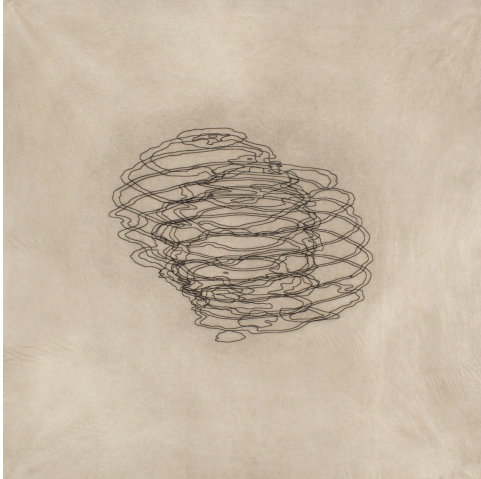
CHARLIE STRONG  
White Rose  
2010  
Photopolymer Etching  
22 x 31" Hahnemuhle | Image 20.5 x 19.75"



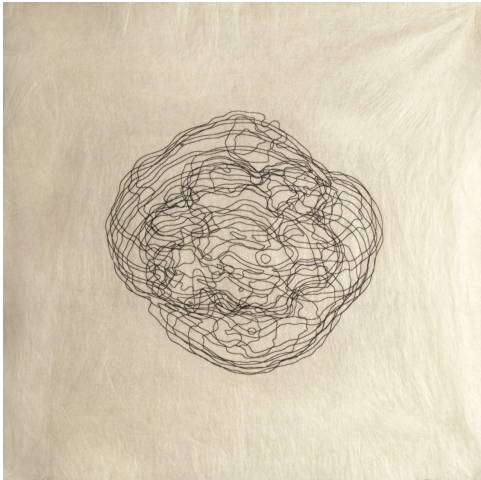
JAY SULLIVAN



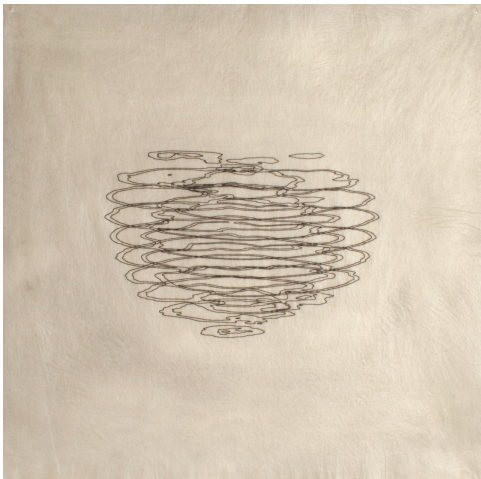
JAY SULLIVAN



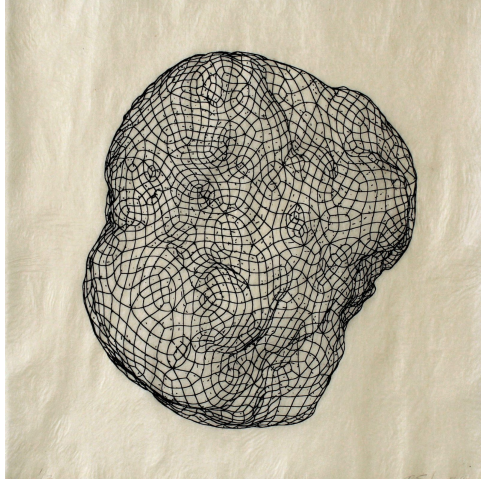
JAY SULLIVAN



JAY SULLIVAN



JAY SULLIVAN



JAY SULLIVAN



DAN WELDEN  
Untitled  
2003  
Carborundum And Gel Collagraph  
With Hand Drawn Solarplate  
16.5 x 23.75" Image | 15 x 31" Hahnemuhle



DAN WELDEN  
Untitled





DAN WELDEN  
Taos Wind



DAN WELDEN  
Falling Chocolate



DAN WELDEN  
Acute Red  
2002





DAN WELDEN  
Entry  
2002



DAN WELDEN  
Red Zinger  
2001



DAN WELDEN  
Inversion  
2000



DAN WELDEN  
Blue Velvet  
2001



DAN WELDEN  
Aboriginal Passage  
2000



DAN WELDEN  
Uluru Passage  
2000



DAN WELDEN  
Untitled 3  
2003



DAN WELDEN  
Crimson Line  
2000



DAN WELDEN  
Untitled 4  
2003





DAN WELDEN  
Aladdin's Vessel  
2004  
Carborundum Collagraph  
With Hand Drawn Solarplate  
15.5 x 19.75" Image | 22 x 31" Mounting



DAN WELDEN  
Blue Rhapsody  
2002

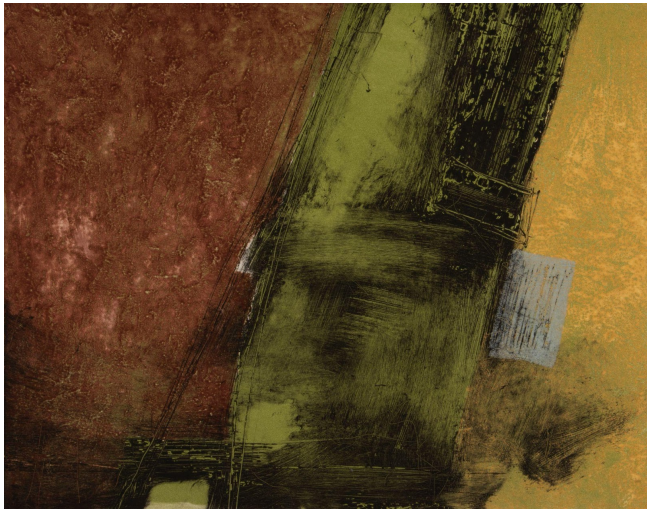


DAN WELDEN  
Upward Bound  
2004





DAN WELDEN  
Converging Dancer  
2004



DAN WELDEN  
Intersection



DAN WELDEN  
Untitled 5  
11.75 x 15.75"



SUZZANNE WIGGIN



SUZZANNE WIGGIN

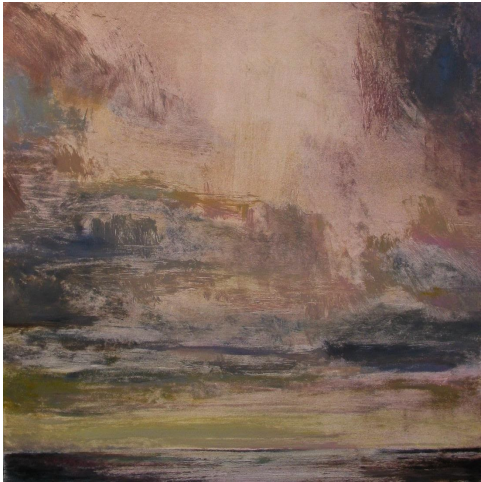


SUZZANNE WIGGIN





SUZZANNE WIGGIN



SUZZANNE WIGGIN



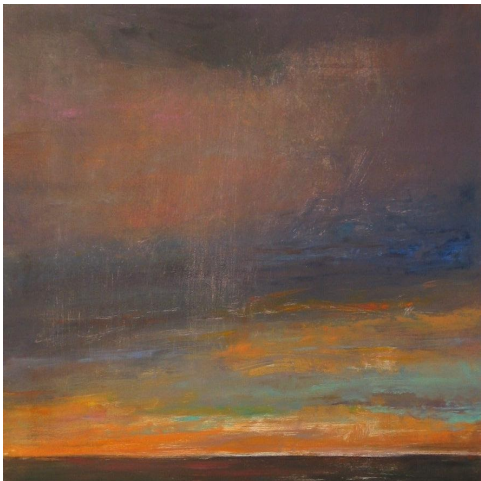
SUZZANNE WIGGIN



SUZZANNE WIGGIN



SUZZANNE WIGGIN



SUZZANNE WIGGIN